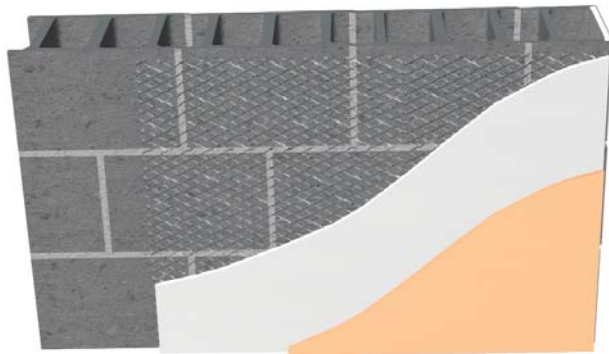


# Dimpled raised lath substrate for superior mechanical bond over solid surfaces.

- Dimples ensure thorough plaster penetration and strong mechanical bond.
- Easily shaped for curved or contoured surfaces.
- Maintains consistent plaster depths.



Self-Furring Dimpled

### Paper-Backed Offset Options

- P** — Paper is offset by 1" on one side and one end. +
- O** — Paper is offset by 2" on one side and one end.

+ Available for non-code work. The International Building Code (IBC) requires a 2" paper lap per ASTM C 1063-06.

Dietrich self-furring dimpled lath is manufactured with approximately 1/4" deep dimples that raises diamond mesh away from solid surfaces to enable thorough plaster or stucco penetration into and behind the lath for superior mechanical bonding. The approximately 1/4" dimples are spaced every 1-1/2" O.C. over the entire 27" x 96" rectangular sheet. This pattern, with approximately 11,000 keys per square yard, serves to hold lath approximately 1/4" away from the surface, enabling the plaster to penetrate fully and bond over solid surfaces like concrete, cement board, column fireproofing, masonry and replastering over old surfaces. To maintain the designed furring characteristics, fasteners must be applied within the dimple cavity.

Dimpled Lath is also available with an asphalt paper-backing for applications that require a moisture barrier. The glue-attached asphalt-saturated building paper also ensures a consistent plaster or stucco depth as the paper prevents excessive plaster waste and stucco thickness variation. Care should be taken to make sure paper overlaps paper in a shingle-like manner during application.



### Self-Furring Dimpled (LAD), (P), (O)

DMF Product Code	Weight		Size				Packaging			
	lbs/yard <sup>2</sup>	kg/m <sup>2</sup>	Width		Length		Pcs/Bundle	Bundles/Skid	Yds <sup>2</sup> /Skid	m <sup>2</sup> /Skid
			Inches	mm	Inches	mm				
LAD (P, O)	1.75	1.0	27	686	96	2438	10	25	500	418
	2.5	1.4	27	686	96	2438	10	25	500	418
	3.4	1.8	27	686	96	2438	10	25	500	418

Self-Furring Dimpled (LAD), (P), (O)